



US007919918B2

(12) **United States Patent**
Kim

(10) **Patent No.:** **US 7,919,918 B2**
(45) **Date of Patent:** **Apr. 5, 2011**

(54) **ORGANIC LIGHT EMITTING DISPLAY DEVICE**

2002/0101177 A1* 8/2002 Bae et al. 315/169.3
2002/0158835 A1* 10/2002 Kobayashi et al. 345/100
2005/0104097 A1* 5/2005 Hirose et al. 257/288

(75) Inventor: **Eun-Ah Kim**, Suwon-si (KR)

FOREIGN PATENT DOCUMENTS

(73) Assignee: **Samsung Mobile Display Co., Ltd.**,
Yongin (KR)

JP 10-209581 8/1998
JP 2002-367523 12/2002
JP 2005-283830 10/2005
KR 10-2004-0058840 7/2004

(*) Notice: Subject to any disclaimer, the term of this patent is extended or adjusted under 35 U.S.C. 154(b) by 1028 days.

OTHER PUBLICATIONS

(21) Appl. No.: **11/590,558**

Chinese Registration Determination Certificate issued on Aug. 11, 2010 by the Chinese Intellectual Property Office in connection with corresponding Korean Patent Application No. 2005-0107028.

(22) Filed: **Oct. 31, 2006**

* cited by examiner

(65) **Prior Publication Data**

US 2007/0103063 A1 May 10, 2007

Primary Examiner — Joseph L Williams
Assistant Examiner — Hana S Featherly

(30) **Foreign Application Priority Data**

Nov. 9, 2005 (KR) 10-2005-0107028

(74) *Attorney, Agent, or Firm* — Knobbe Martens Olson & Bear, LLP.

(51) **Int. Cl.**
H01J 51/00 (2006.01)

(57) **ABSTRACT**

(52) **U.S. Cl.** **313/506**; 313/512

Provided is an organic light emitting display device that reduces a unused area and reduces the voltage drop of a driving power bus line. The organic light emitting display device includes a pixel region having a plurality of organic light emitting diodes; a power bus line that is located on an outer side of the pixel region and supplies power to each of the organic light emitting diodes; and a metal layer that overlaps the driving power bus line, is electrically connected to the driving power bus line, and comprises a panel mark.

(58) **Field of Classification Search** 313/506,
313/512

See application file for complete search history.

(56) **References Cited**

U.S. PATENT DOCUMENTS

5,799,080 A * 8/1998 Padmanabhan et al. 713/193
6,307,613 B1 10/2001 Iida

16 Claims, 6 Drawing Sheets

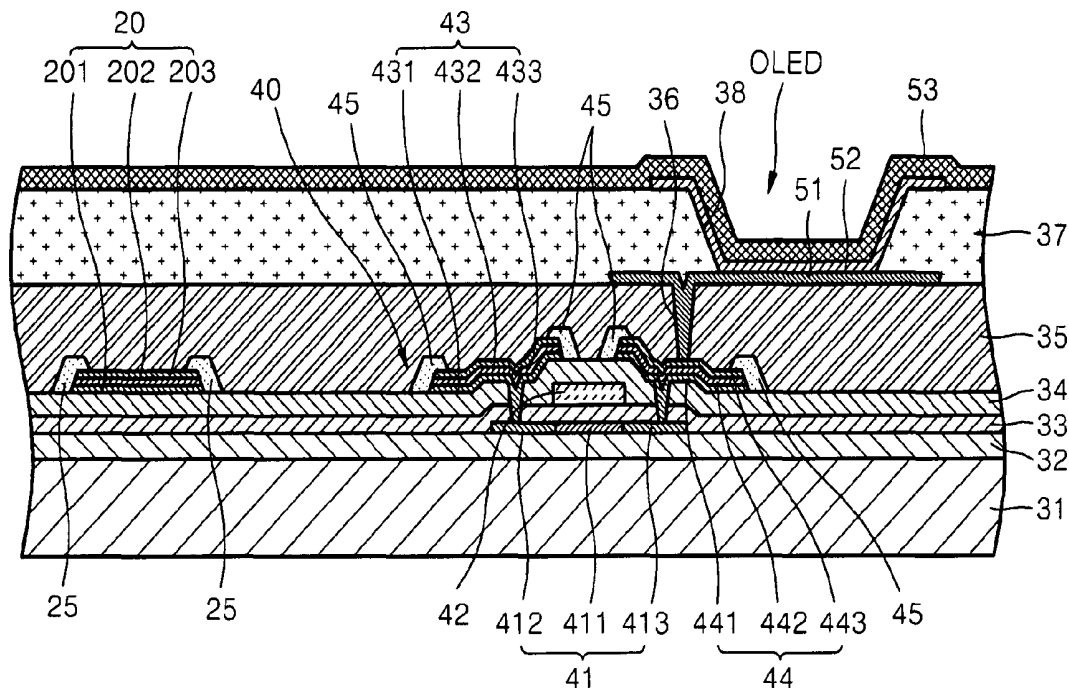


FIG. 1

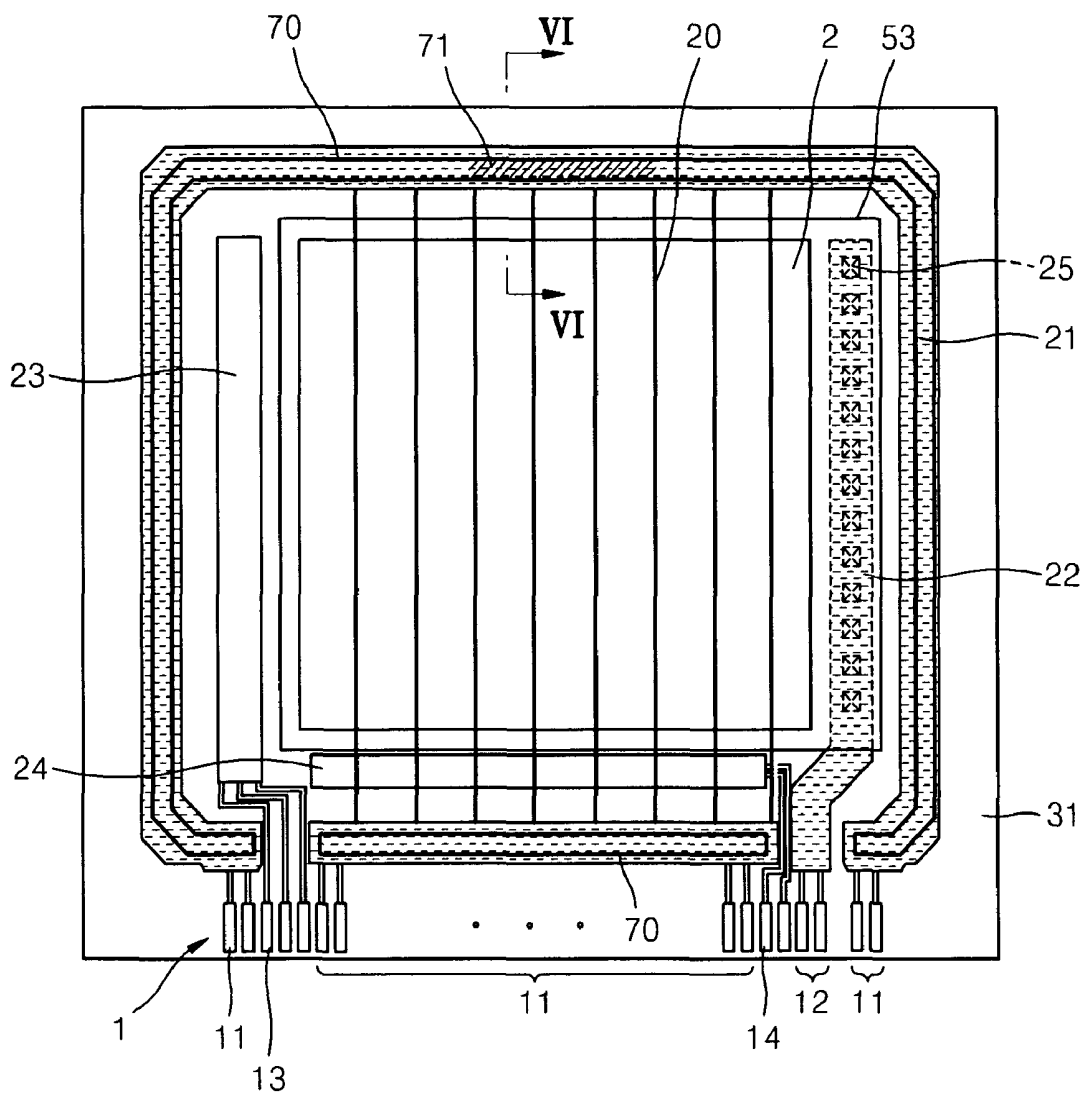


FIG. 2

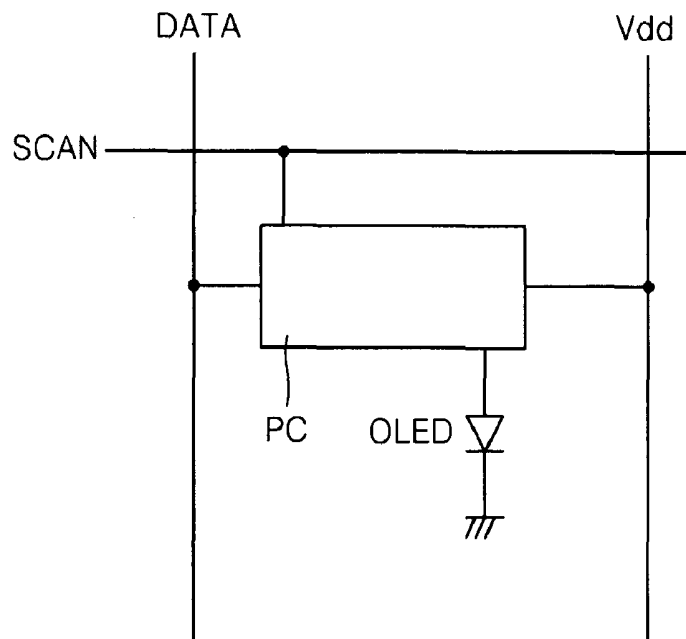


FIG. 3

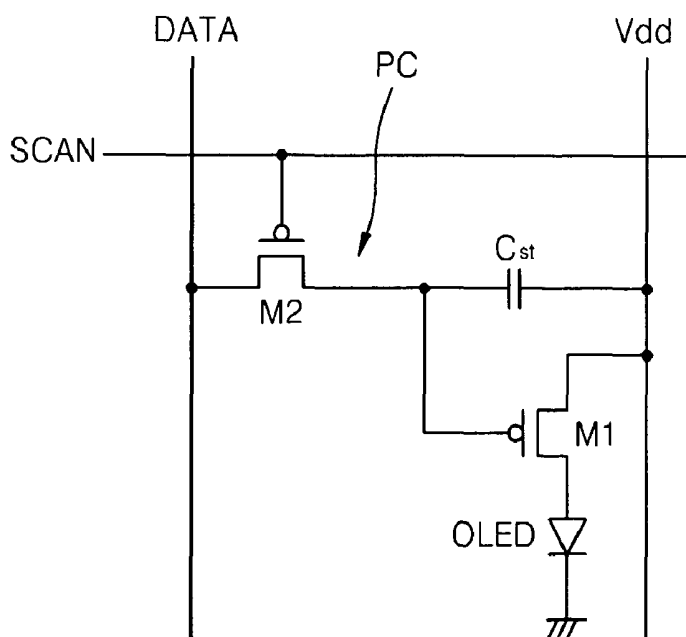


FIG. 5

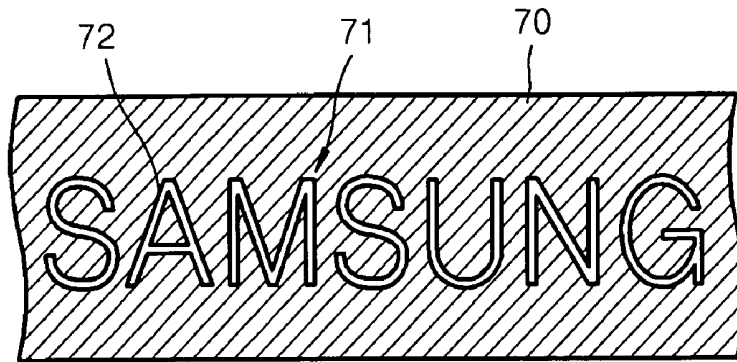


FIG. 6

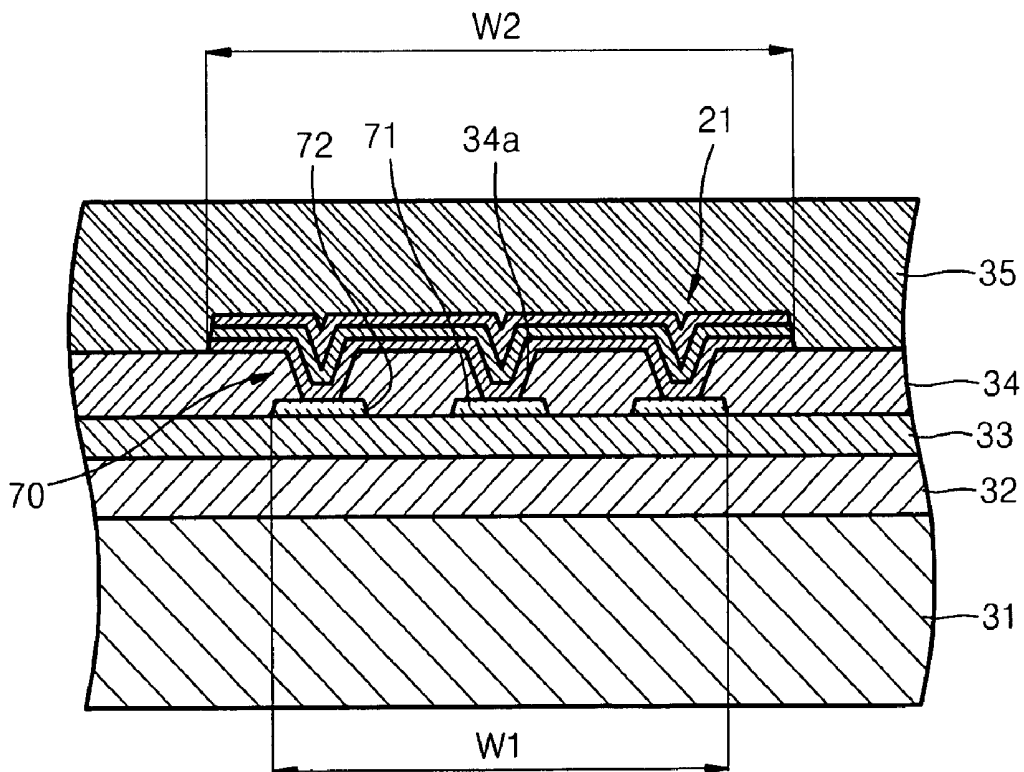


FIG. 7

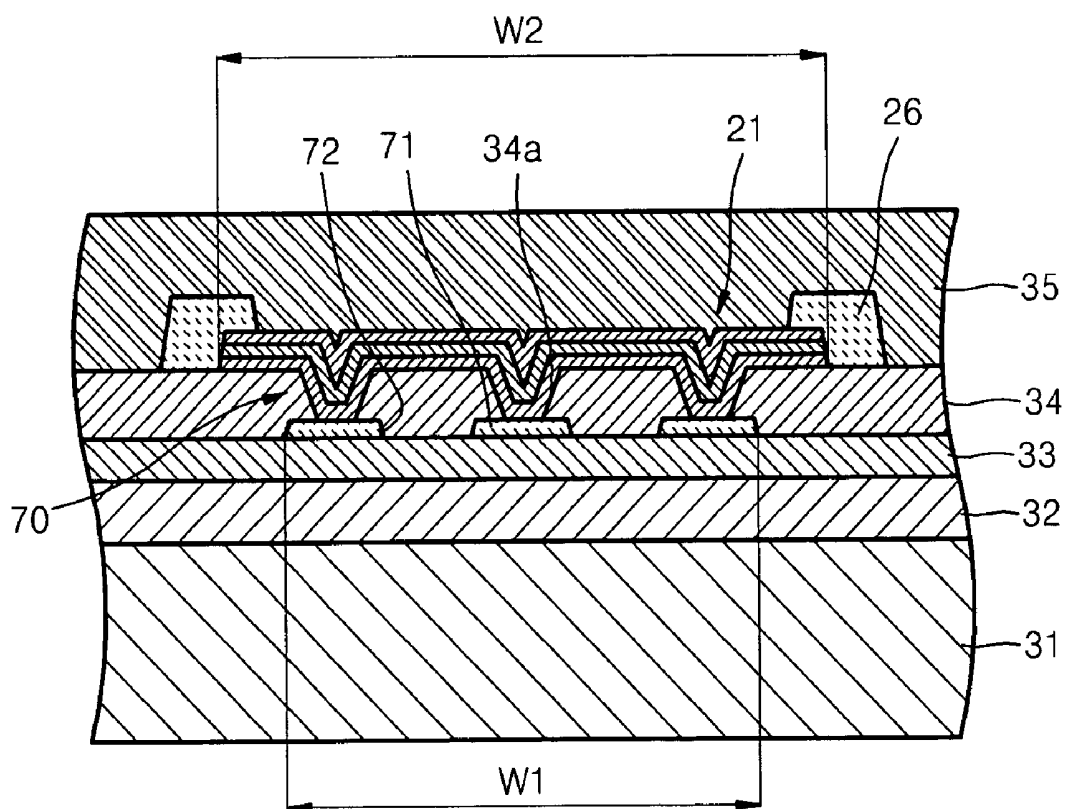
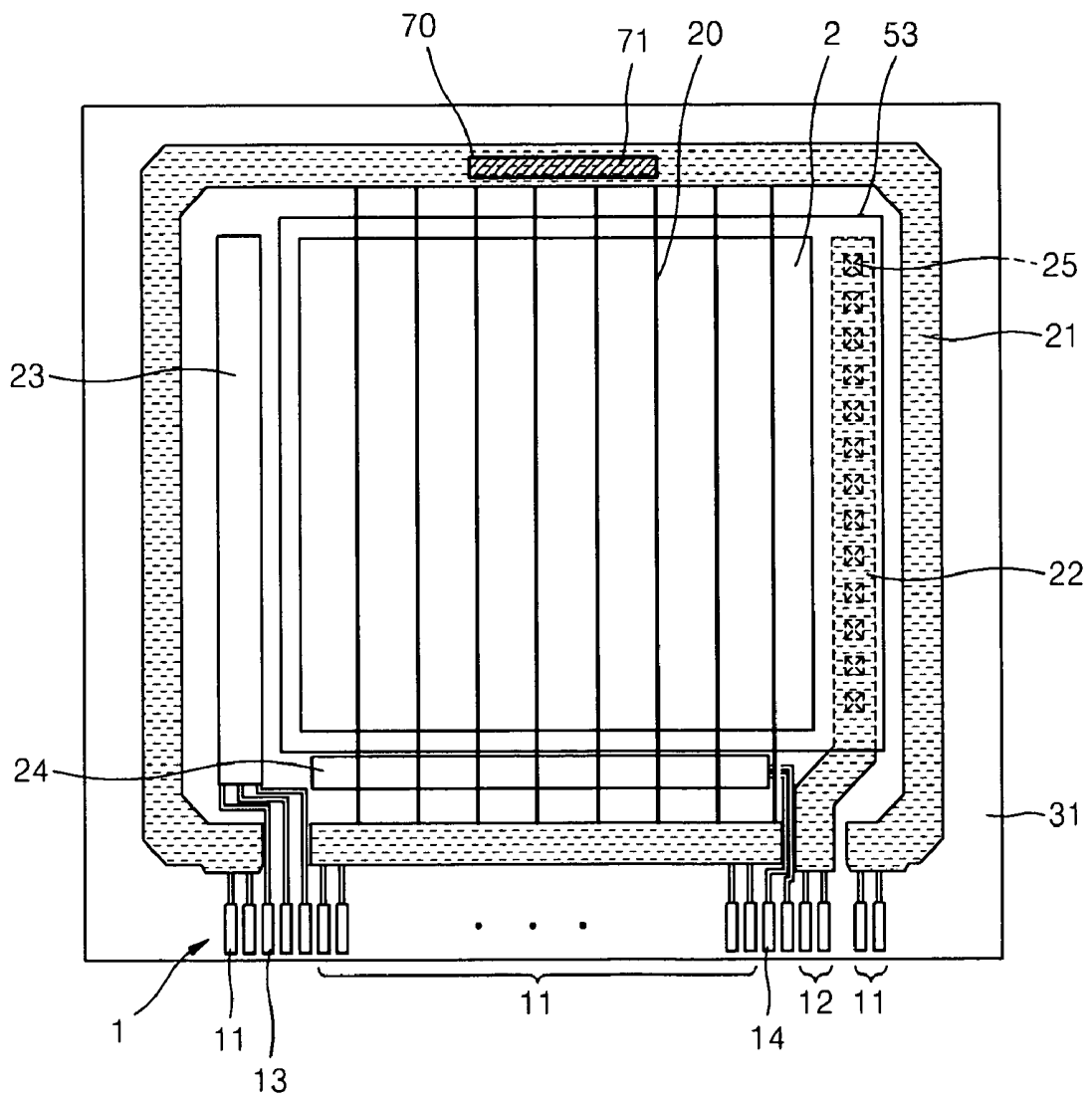


FIG. 8



ORGANIC LIGHT EMITTING DISPLAY DEVICE

CROSS-REFERENCE TO RELATED PATENT APPLICATION

This application claims the benefit of Korean Patent Application No. 10-2005-0107028, filed on Nov. 9, 2005, in the Korean Intellectual Property Office, the disclosure of which is incorporated herein in its entirety by reference.

BACKGROUND OF THE INVENTION

1. Field of the Invention

The present invention relates to an organic light emitting display device, and more particularly, to an organic light emitting display device with reduced unused image area because of a panel identification mark, and with low resistance power bus lines.

2. Description of the Related Technology

A panel identification mark is included in a flat panel display device such as a liquid crystal display device, an organic light emitting display device, or an inorganic light emitting display device, to allow convenient identification, tracking of the panel, and evaluation of the display cells.

The panel identification mark is located on a separate area outside the display region where images are displayed. Therefore, the space occupied by the panel identification mark is unused space, where images are not displayed, and the unused space increases in area as the size of the panel identification mark increases.

Accordingly, in the conventional art, the panel identification mark is usually located in existing unused space, for instance under a driving chip, where it does not affect other signals and does not need additional area.

However, when the panel identification mark is formed under the driving chip, it is difficult to identify the panel identification mark after the driving chip is mounted.

Also, the liquid crystal display device in the conventional art does not supply additional power to each of the pixels. However, in the case of an active matrix (AM) organic light emitting display device, a power supply line for supplying power to each pixel must be extended. Accordingly, the unused area in the panel is further increased. Therefore, it is difficult to lay out the panel identification mark without increasing the unused area of the panel.

SUMMARY OF THE CERTAIN INVENTIVE ASPECTS

An organic light emitting display device that reduces unused area and reduces a drive voltage drop is disclosed.

One embodiment is an organic light emitting display device including a pixel region having a plurality of organic light emitting diodes, a power bus line located outside of the pixel region and configured to supply power to each of the organic light emitting diodes, and a metal layer located above or below the power bus line and electrically connected to the power bus line and including a panel mark.

Another embodiment is an organic light emitting display device including a pixel region having a plurality of organic light emitting diodes, an electrically operative line including first and second conductors, the first conductor protecting the second conductor from corrosion, and the second conductor having conductivity higher than the first conductor.

Another embodiment is an organic light emitting display device including a pixel region having a plurality of organic

light emitting diodes, and an electrically operative line including a panel identification mark.

BRIEF DESCRIPTION OF THE DRAWINGS

The above and other features and advantages will become more apparent with disclosure of embodiments discussed with reference to the attached drawings in which:

FIG. 1 is a plan view of an organic light emitting display device according to an embodiment;

FIG. 2 is a schematic diagram of a unit pixel of an organic light emitting display device including a pixel circuit according to an embodiment;

FIG. 3 is a detailed schematic diagram of the unit pixel of FIG. 2;

FIG. 4 is cross-sectional view of the circuit of FIG. 3;

FIG. 5 is a partial enlarged plan view of a panel mark of FIG. 1;

FIG. 6 is a cross-sectional view taken along line VI-VI of FIG. 1;

FIG. 7 is a modified version of the cross-section of FIG. 6; and

FIG. 8 is a plan view of an organic light emitting display device according to another embodiment.

DETAILED DESCRIPTION OF CERTAIN INVENTIVE EMBODIMENTS

Certain embodiments will now be described more fully with reference to the accompanying drawings.

FIG. 1 is a plan view of an active matrix (AM) organic light emitting display device according to an embodiment.

Referring to FIG. 1, a display region 2 where images are displayed is formed on a substrate 31. The display region 2 is sealed by an additional sealing member (not shown) to protect the display region 2 from impact, moisture, and air. The sealing member may be, for example, an insulating substrate or a metal cap.

Another embodiment is a terminal region 1 comprising terminals is located on an end portion of the substrate 31 where the display region 2 is formed. The terminal region 1 is exposed outside the sealing member.

Around the display region 2, a driving power bus line 21 for supplying driving power to a VDD line 20, an electrode power bus line 22 connected to a facing electrode 53 to supply facing electrode power, and various circuits 23 and 24 that control signals applied to the display region 2.

Areas where the terminal region 1, the driving power bus line 21, the electrode power bus line 22, and the circuits 23 and 24 are located correspond to an unused area where images are not displayed.

The driving power bus line 21 is formed to surround the entire display region 2 from an end of a driving power terminal unit 11 to the other end of the driving power terminal unit 11, and also, is disposed in a lower side of the display region 2 by being connected through driving power lines 20 that cross the display region 2.

The electrode power bus line 22, which is electrically connected to an electrode of the organic light emitting display device in the display region 2 and will be described in detail later, is formed on a side of the display region 2. The electrode connected to the electrode power bus line 22 can be extended to cover the electrode power bus line 22. An insulating film is interposed between the electrode connected to the electrode power bus line 22 and the electrode power bus line 22, and the electrode and the electrode power bus line 22 are connected through a plurality of contact holes 25.

The vertical circuit unit **23** and the horizontal circuit unit **24** are mounted between the driving power bus line **21** and the display region **2**. The vertical circuit unit **23** can be a scan driving circuit unit that applies scan signals to gate lines of the display region **2**, and is electrically connected to a scan terminal unit **13** in the terminal region **1**. The horizontal circuit unit **24** can be a data driving circuit unit that applies data signals to data lines of the display region **2**, and is electrically connected to a data terminal unit **14** in the terminal region **1**. The vertical circuit unit **23** and the horizontal circuit unit **24** can be formed on the substrate **31** using a patterning method, or can include an external IC or COG.

The display region **2** includes a plurality of pixels, each of which can have a pixel circuit as depicted in FIG. **2**.

Referring to FIG. **2**, each pixel includes a data line Data, a scan line Scan, and a Vdd line Vdd that supplies driving power to an organic light emitting diode (OLED). The Vdd line Vdd is the Vdd line of FIG. **1**.

The pixel circuit PC of each pixel is electrically connected to the data line, the scan line Scan, and the Vdd line Vdd, and controls the light emission of the OLED.

FIG. **3** is a detailed schematic diagram of the unit pixel of FIG. **2**. The pixel circuit PC of each pixel includes two thin film transistors M1 and M2 and one capacitor unit Cst.

Referring to FIG. **3**, each pixel of the organic light emitting display device according to an embodiment, includes at least two thin film transistors (TFTs), i.e. a switching TFT M2 and a driving TFT M1, a capacitor unit Cst, and an OLED.

The switching TFT M2 is turned on or off by a scan signal applied to a scan line Scan to transmit a data signal applied to the data line Data to the storage capacitor unit Cst and the driving TFT M1. According to embodiments of the present invention, the switching device is not limited to the switching TFT M2 depicted in FIG. **4**, and can be a switching circuit having a plurality of TFTs and capacitors, or can further include a circuit that compensates for a threshold voltage Vth value of the driving TFT M1 or a circuit that compensates for a voltage drop of the Vdd power line Vdd.

The driving TFT M1 determines the current input to the OLED according to a data signal transmitted through the switching TFT M2.

The capacitor unit Cst stores the data signal transmitted from the switching TFT M2 for one frame period.

In the circuit diagram of FIG. **3**, the driving TFT M1 and the switching TFT M2 are depicted as PMOS TFTs, but other transistors may also be used. One or both of the driving TFT M1 and the switching TFT M2 can be an NMOS TFT. Also, the number of TFTs and capacitors is not limited to that shown in FIG. **3**, and can be increased as necessary.

In one embodiment, the pixel circuit PC has a cross-sectional structure as depicted in FIG. **4**. FIG. **4** is a cross-sectional view of a portion of the pixel of FIG. **3**.

Referring to FIG. **4**, a TFT **40** and an OLED are included on a substrate **31**.

The substrate **31** can be formed of acryl, polyimide, polycarbonate, polyester, mylar, or a plastic material, but embodiments are not limited to these materials, and the substrate **31** can be formed of a metal foil such as SUS, tungsten, etc., glass or another material or combination of materials.

Although not depicted, a barrier layer and/or a buffer layer can be formed on the upper surface of the substrate **31** to prevent the diffusion of impurity ions, prevent the penetration of moisture or external air, and/or planarize the surface.

An active layer **41** of the TFT **40** is formed on the insulating layer **32** using a semiconductor material, and a gate insulating film **33** is formed to cover the active layer **41**. The active layer **41** can be formed of an inorganic semiconductor material

such as amorphous silicon, polysilicon, or an organic semiconductor material. The active layer **41** includes a channel region **411** between a source region **412** and a drain region **413**.

Another embodiment is a gate electrode **42** is formed on the gate insulating film **33**, and an interlayer insulating film **34** covering the gate electrode **42** is formed. Another embodiment is a source electrode **43** and a drain electrode **44** are formed on the interlayer insulating film **34**. Another embodiment is a passivation film **35** and a pixel defining film **37** are sequentially formed to cover the source electrode **43** and the drain electrode **44**.

The gate insulating film **33**, the interlayer insulating film **34**, the passivation film **35**, and the pixel defining film **37** can each have a single layer structure or a multi-layer structure, and can be formed of an organic material, an inorganic material, or a composite of organic and inorganic materials.

The stacking structure of a TFT according to these embodiments is not limited to that of the TFT **40**, and various TFT structures can be used.

Another embodiment is a pixel electrode **51**, which is an electrode of the OLED, is formed on the passivation film **35**, and a pixel defining film **37** is formed on the pixel electrode **51**. After exposing the pixel electrode **51** through a predetermined opening **38** in the pixel defining film **37**, an organic light emitting film **52** of the OLED is formed.

The OLED emits red, green, or blue light according to the current supplied to form a predetermined image, and comprises the pixel electrode **51** that contacts the drain electrode **44** of the TFT **40** through a contact hole **36**, a facing electrode **53** covering all of the pixels, and the organic light emitting film **52**, which is located between the pixel electrode **51** and the facing electrode **53** and emits light.

The pixel electrode **51** and the facing electrode **53** are insulated from each other by the organic light emitting film **52**, and apply voltages of opposite polarity to the organic light emitting film **52** so that the organic light emitting film **52** emits light.

The organic light emitting film **52** can be, for example, a small molecular weight organic film or a polymer organic film. If the organic light emitting film **52** is a small molecular weight organic film, the organic light emitting film **52** can include a hole injection Layer (HIL), a hole transport layer (HTL), an emission layer (EML), an electron transport layer (ETL), or an electron injection layer (EIL), can be stacked in a single structure or a composite structure, and can be composed of copper phthalocyanine (CuPc), N,N'-di(naphthalene-1-yl)-N,N'-diphenyl-benzidine (NPB), or tris-8-hydroxyquinoline aluminum (Alq3). The small molecular weight organic film can be formed using a vacuum evaporation method. The HIL, the HTL, the ETL, and the EIL are common electrodes, and can be commonly formed in red, green, and blue pixels. Accordingly, the common electrodes can cover the pixels like the facing electrode **53**.

If the organic light emitting film **52** is formed of a polymer organic film, the organic light emitting film **52** can include a HTL and an EML. The HTL can be formed of PEDOT, and the EML can be formed of poly-phenylenevinylene (PPV) and polyfluorene. The polymer organic film can be formed by screen printing, ink jet printing, etc.

The organic light emitting film **52** is not limited to the configuration described above, and can take various forms.

The pixel electrode **51** functions as an anode electrode, and the facing electrode **52** functions as a cathode electrode. In some embodiments, the polarity of the pixel electrode **51** and the facing electrode **53** may be reversed.

In the case of a bottom emission type display device, the pixel electrode **51** can be a transparent electrode, and the facing electrode **53** can be a reflective electrode. The pixel electrode **51** can comprise a transparent material having a high work function, such as, but not limited to ITO, IZO, In_2O_3 , or ZnO, and the facing electrode **53** can comprise a reflective metal having a low work function, such as, but not limited to Ag, Mg, Al, Pt, Pd, Au, Ni, Nd, Ir, Cr, Li, Ca, or a compound of these metals.

In the case of a top emission type display device, the pixel electrode **51** can be a reflective electrode, and the facing electrode **53** can be a transparent electrode. The pixel electrode **51** can be formed of a material having a high work function such as, but not limited to, ITO, IZO, In_2O_3 , or ZnO after forming a reflective film using Ag, Mg, Al, Pt, Pd, Au, Ni, Nd, Ir, Cr, Li, Ca, or a compound of these metals. The facing electrode **53** can include a material layer comprising a metal having a low work function, such as, but not limited to, Li, Ca, LiF/Ca, LiF/Al, Al, Ag, Mg, or a compound of these metals, and an auxiliary electrode layer or a bus electrode line comprising a transparent conductive material, such as, but not limited to, ITO, IZO, ZnO or In_2O_3 , formed on the material layer.

In the case of a double sided emission type display device, both the pixel electrode **51** and the facing electrode **53** can be transparent electrodes.

The materials for forming the pixel electrode **51** and the facing electrode **53** are not limited to the materials described above. For example, the pixel electrode **51** and the facing electrode **53** can be formed of a conductive paste containing a conductive organic material or conductive particles of Ag, Mg, Cu, etc. When the conductive paste is used, the paste can be printed by inkjet printing and annealed to form an electrode.

After the OLED is formed, the upper part of the OLED is sealed to substantially prevent exposure to the atmosphere.

In some embodiments, the gate electrode **42**, the source electrode **43**, and the drain electrode **44** can comprise a metal such as Ag, Mg, Al, Pt, Pd, Au, Ni, Nd, Ir, Cr, Li, Ca, a compound of these metals, or a transparent conductive material, such as ITO, IZO, ZnO or In_2O_3 as the conductor described above. Also, the gate electrode **42**, the source electrode **43**, and the drain electrode **44** can comprise a conductive paste containing a conductive organic material or conductive particles of Ag, Mg, Cu, etc.

In the OLED according to the embodiment illustrated in FIG. 4, the gate electrode **42** has a single layer structure, the source electrode **43** and the drain electrode **44** have a three-layer structure, but embodiments are not limited to these structures. The gate electrode **42** can also have a three-layer structure. Hereinafter, description will focus mainly on embodiments in which the gate electrode **42** has a single layer structure and the source electrode **43** and the drain electrode **44** have a three-layer structure as depicted in FIG. 5.

The source electrode **43** can have a stacked structure including first, second and third conductive layers **431**, **432** and **433**, and the drain electrode **44** can have a stacked structure including first, second, and third conductive layers **441**, **442**, and **443**. The second conductive layers **432** and **442** can be formed of aluminum or an aluminum alloy, such as Al, AlSi, AlNd, or AlCu.

When the second conductive layers **432** and **442** are formed of an aluminum group metal, at least one of the first conductive layers **431** and **441** and the third conductive layers **433** and **443** can be formed of at least one material selected from Cr, Cr alloy, Mo, Mo alloy, W, and W alloy.

In one embodiment, the first conductive layers **431** and **441** and the third conductive layers **433** and **443** can comprise molybdenum tungsten (MoW) alloy, and the second conductive layers **432** and **442** can be formed of AlNd alloy.

When the second conductive layers **432** and **442** are formed of an aluminum group metal, at least one of the first conductive layers **431** and **441** and the third conductive layers **433** and **443** can comprise at least one material selected from Ti, a Ti alloy, Ta, and a Ta alloy.

In one embodiment, the first conductive layers **431** and **441** and the third conductive layers **433** and **443** can comprise Ti, and the second conductive layers **432** and **442** can comprise an aluminum group metal.

However, the conductive layers are not limited thereto, and a layer structure can further be included in addition to the three layer structure.

As shown in FIG. 4, when the source electrode **43** and the drain electrode **44** are formed in a multi-layer structure, a cladding unit **45** can be formed of an insulating material to cap the side of the source electrode **43** and the drain electrode **44**. When the cladding unit **45** is formed of an organic material, the organic material can comprise a polymer derivative having a phenol group, an acryl group polymer, an imide group polymer, an aryether group polymer, an amide group polymer, a fluorine group polymer, a p-xylyrene group polymer, a vinyl alcohol group polymer, and a composition of more than one of these materials. In some embodiments, the passivation film **35** can be formed of an acryl material, for example, a photosensitive acryl material that can be easily patterned. When the cladding unit **45** is formed of an inorganic material, the inorganic material can comprise at least one of SiO_2 , SiN_x , SiON , Al_2O_3 , TiO_2 , Ta_2O_5 , HfO_2 , ZrO_2 , Barium Strontium Titanate (BST), and PZT.

As described above, since the source electrode **43** and the drain electrode **44** have a multilayer structure, the overall conductivity of the source electrode **43** and the drain electrode **44** can be improved. This occurs because the second conductive layers **432** and **442** are formed of an aluminum group metal having high conductivity. The second conductive layers **432** and **442** are protected by the first conductive layers **431** and **441** and the third conductive layers **433** and **443**. The multilayer structure may also be used for electrically operative lines other than power lines, such as signal lines, control lines, and shielding lines. Also, the cladding unit **45** can prevent the second conductive layers **432** and **442** formed of an aluminum group metal from being corroded or etched due to the penetration of an etchant through the side surfaces of the source electrode **43** and the drain electrode **44**. The cladding unit **45** is particularly useful for protecting the source electrode **43** and the drain electrode **44** from the penetration of an etchant when the pixel electrode **51** is patterned. The cladding may also be used for electrically operative lines other than power lines, such as signal lines, control lines, and shielding lines.

Another embodiment is a Vdd line **20** can also be formed when the source electrode **43** and the drain electrode **44** are formed. The Vdd line formed at the same time as the source electrode **43** and the drain electrode **44** also has a first conductive layer **201**, a second conductive layer **202**, and a third conductive layer **203**. The first conductive layer **201**, the second conductive layer **202**, and the third conductive layer **203** can be formed of the same materials described above.

Another embodiment is a cladding unit **25** can also be formed in the Vdd line **20** as described above. The function of the cladding unit **25** is the same as that of the cladding unit **45**, thus a detailed description thereof will be omitted.

When the source electrode **43** and the drain electrode **44** are formed, a plurality of conductors can be formed in addition to the Vdd line **20** in the pixel. For example, the driving power bus line **21** and the electrode power bus line **22** shown in FIG. 1 can be formed at the same time.

In some embodiments, a metal layer **70** overlaps the driving power bus line **21** and connects electrically to the driving power bus line **21**. The metal layer **70** can be formed, for example, adjacent to the driving power bus line **21** and have a length substantially corresponding to the driving power bus line **21**. The metal layer **70** may be long enough to reduce the voltage drop of the driving power bus line **21**, which will be described later.

As seen in FIG. 4, the metal layer **70** can be formed at the same time as the gate electrode **42** of the TFT **40**, and accordingly, can be formed of the same materials as the gate electrode **42**.

The metal layer **70** may have a width **W1** smaller than the width **W2** of the driving power bus line **21**. Accordingly, as shown in FIG. 1, the metal layer **70** can be completely covered by the driving power bus line **21**. Accordingly, unused area is not increased by metal layer **70**.

The metal layer **70** may be used to form a panel mark **71** which is an identification mark for identifying the panel. As shown in FIG. 5, the panel mark **71** can be formed with openings **72** by engraving the metal layer **70**, but other techniques may also be used. For example, a mark can be engraved on the metal layer **70** using a laser etc.

Referring to FIG. 6, the metal layer **70** is separated from the driving power bus line **21** by an interlayer insulating film **34** interposed therebetween. However, contact holes **34a** are formed in the interlayer insulating film **34** so that the driving power bus line **21** can contact the metal layer **70**. Accordingly, the metal layer **70** and the driving power bus line **21** are electrically connected, thereby reducing sheet resistance. Accordingly, the IR drop, i.e. voltage drop of the driving power bus line **21** can be reduced.

FIG. 7 is a cross-sectional view of a cladding unit **26** on the driving power bus line **21** according to another embodiment. As described above, the cladding unit **26** can prevent an aluminum layer of the driving power bus line **21** from being corroded.

The metal layers **70** according to embodiments depicted in FIGS. 6 and 7 may be formed of the same materials as the gate electrode and may be formed in a single layer, but other configurations may also be used. In some embodiments, the gate electrode and the source and drain electrodes are formed in a structure of more than three layers, and the metal layer **70** can also have a structure of more than three layers. In this case, an additional cladding unit may be included.

FIG. 8 is a plan view of an organic light emitting display device according to another embodiment. Referring to FIG. 8, the metal layer **70** can be formed to have a length substantially corresponding to the panel mark **71**.

The above embodiments are described with respect to an organic light emitting display device, but the inventive aspects can be applied to various flat panel display devices such as a liquid crystal display.

According to described embodiments, an additional layout for locating a panel identification mark is unnecessary, thereby reducing the unused area. Various modifications can be made. For example, the mark may be associated with electrically operative lines other than power lines, such as signal lines, control lines, and shielding lines.

The drive voltage drop can also be reduced since the panel identification mark is electrically connected to a driving power bus line.

Another embodiment is a cladding unit covering the side surfaces of a terminal of a pad unit can prevent a conductor from being corroded or etched by an etching solution during a subsequent processing.

While the embodiments described herein have been particularly shown and described with reference to several examples, it will be understood by those of ordinary skill in the art that various changes in form and detail may be made therein without departing from the spirit and scope of the inventive aspects.

What is claimed is:

1. An organic light emitting display device comprising:
 - a display region including a plurality of pixels, each pixel comprising:
 - a thin film transistor comprising a source electrode, a drain electrode, and a gate electrode,
 - an organic light emitting diode electrically connected to the thin film transistor, and
 - a VDD line electrically connected to the thin film transistor;
 - a driving power bus line located outside of the display region and configured to supply power to the VDD line of each pixel; and
 - a metal layer overlapping the driving power bus line and electrically connected to the driving power bus, wherein the metal layer and the driving power bus collectively form a panel mark.
2. The organic light emitting display device of claim 1, wherein an insulating layer is positioned between the metal layer and the driving power bus line, and the metal layer and the driving power bus line contact each other through contact holes formed in the insulating layer.
3. The organic light emitting display device of claim 1, wherein the driving power bus line is formed of the same material as the source and drain electrodes of the thin film transistors, and
 - the metal layer is formed of the same material as the gate electrodes of the thin film transistors.
4. The organic light emitting display device of claim 1, wherein at least one of the driving power bus line and the metal layer comprises, sequentially stacked, a first conductive layer, a second conductive layer, and a third conductive layer, wherein the second conductive layer comprises at least one of aluminum and aluminum alloy.
5. The organic light emitting display device of claim 4, wherein at least one of the first conductive layer and the third conductive layer comprises at least one of Cr, Cr alloy, Mo, Mo alloy, W, and W alloy.
6. The organic light emitting display device of claim 4, wherein at least one of the first conductive layer and the third conductive layer comprises at least one of Ti, Ti alloy, Ta, and Ta alloy.
7. The organic light emitting display device of claim 1, further comprising a cladding unit configured to cover at least a side of the driving power bus line.
8. The organic light emitting display device of claim 7, wherein the cladding unit comprises at least one of a polymer derivative comprising a phenol group, an acryl group polymer, an imide group polymer, an aryether group polymer, an amide group polymer, a fluorine group polymer, a p-xylylene group polymer, a vinyl alcohol group polymer, and a combination of these materials.
9. The organic light emitting display device of claim 7, wherein the cladding unit comprises an inorganic material.

9

10. The organic light emitting display device of claim 9, wherein the cladding unit is formed of at least one material selected from the group consisting of SiO₂, SiN_x, SiON, Al₂O₃, TiO₂, Ta₂O₅, HfO₂, ZrO₂, Barium Strontium Titanate (BST), and PZT.

11. The organic light emitting display device of claim 1, wherein the metal layer is formed within the width of the driving power bus line.

12. The organic light emitting display device of claim 1, wherein the metal layer is located adjacent to the driving power bus line.

10

13. The organic light emitting display device of claim 1, wherein the metal layer has a length substantially corresponding to the driving power bus line.

14. The organic light emitting display device of claim 1, wherein the panel mark is formed by removing portions of the metal layer.

15. The organic light emitting display device of claim 1, wherein the panel mark is formed by the metal layer.

16. The organic light emitting display device of claim 1, wherein the panel mark is permanent.

* * * * *

UNITED STATES PATENT AND TRADEMARK OFFICE
CERTIFICATE OF CORRECTION

PATENT NO. : 7,919,918 B2
APPLICATION NO. : 11/590558
DATED : April 5, 2011
INVENTOR(S) : Eun-Ah Kim

Page 1 of 1

It is certified that error appears in the above-identified patent and that said Letters Patent is hereby corrected as shown below:

At column 6, line 26, please delete “p-xylyrene”, and insert -- p-xylylene --, therefor.

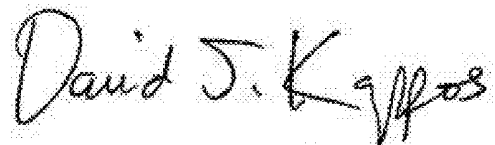
At column 7, line 22, please delete “by”, and insert -- by the --, therefor.

At column 7, line 24, please delete “indentification”, and insert -- identification --, therefor.

At column 7, line 60, please delete “indentification”, and insert -- identification --, therefor.

At column 8, line 63, Claim 8, please delete “p-xylyrene”, and insert -- p-xylylene --, therefor.

Signed and Sealed this
First Day of November, 2011

A handwritten signature in black ink that reads "David J. Kappos". The signature is written in a cursive style with a large initial "D".

David J. Kappos
Director of the United States Patent and Trademark Office

专利名称(译)	有机发光显示装置		
公开(公告)号	US7919918	公开(公告)日	2011-04-05
申请号	US11/590558	申请日	2006-10-31
[标]申请(专利权)人(译)	KIM EUN AH		
申请(专利权)人(译)	金恩AH		
当前申请(专利权)人(译)	三星移动显示器有限公司.		
[标]发明人	KIM EUN AH		
发明人	KIM, EUN-AH		
IPC分类号	H01L51/00		
CPC分类号	H01L27/3244 H01L27/3279 H01L27/3276 H01L27/3262		
优先权	1020050107028 2005-11-09 KR		
其他公开文献	US20070103063A1		
外部链接	Espacenet	USPTO	

摘要(译)

提供一种有机发光显示装置，其减少未使用区域并减小驱动电源总线的电压降。有机发光显示装置包括具有多个有机发光二极管的像素区域；电源总线，位于像素区域的外侧，并向每个有机发光二极管供电；与驱动电源总线重叠的金属层电连接到驱动电源总线，并包括面板标记。

